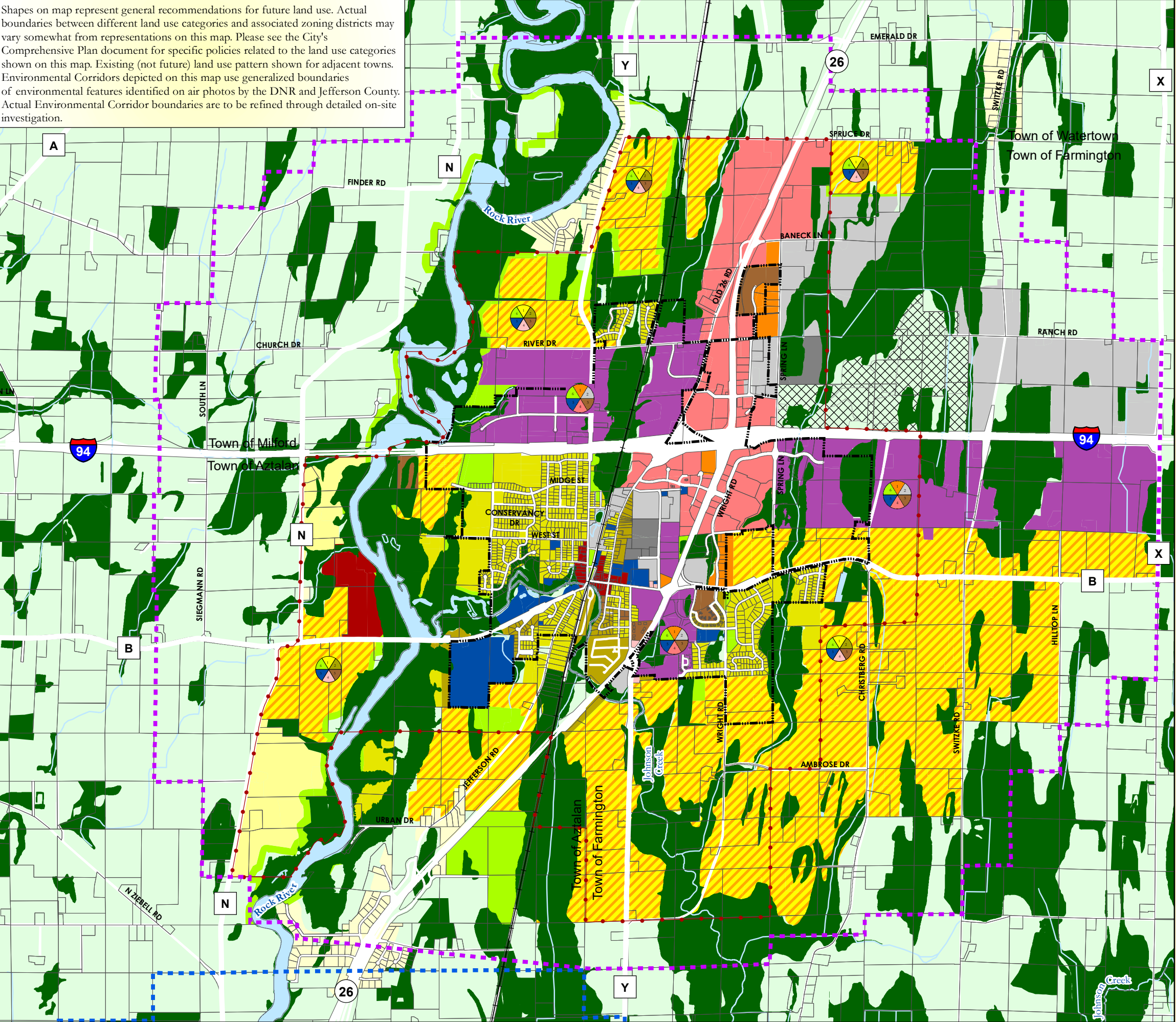


Shapes on map represent general recommendations for future land use. Actual boundaries between different land use categories and associated zoning districts may vary somewhat from representations on this map. Please see the City's Comprehensive Plan document for specific policies related to the land use categories shown on this map. Existing (not future) land use pattern shown for adjacent towns. Environmental Corridors depicted on this map use generalized boundaries of environmental features identified on air photos by the DNR and Jefferson County. Actual Environmental Corridor boundaries are to be refined through detailed on-site investigation.



Village of Johnson Creek Comprehensive Plan

7

Future Land Use

- Village Limits
- Johnson Creek Extraterritorial Boundary
- City of Jefferson Extraterritorial Jurisdiction
- Urban Service Area Boundary
- Parcels
- Railroad

Future Land Use Categories

- Rural Holding
 - Single Family Residential - Septic
 - Single Family Residential - Large Lot
 - Single Family Residential - Sewered
 - Two Family/Townhouse Residential
 - Mixed Residential
 - Planned Neighborhood
 - Planned Office
 - Neighborhood Commercial
 - Planned Commercial
 - Downtown
 - Planned Industrial
 - General Industrial
 - Extraction & Disposal
 - Planned Mixed Use
 - Community Facilities
 - Public Parks & Open Space
 - Environmental Corridor
 - Surface Water
 - Right of Way
1. Single Family Residential-Sewered
2. Two Family/Townhouse Residential
3. Mixed Residential
4. Neighborhood Commercial
5. Community Facilities
6. Public Parks & Open Space
1. Planned Office
2. Planned Industrial
3. Mixed Residential
4. Planned Commercial
5. Community Facilities
6. Public Parks & Open Space

0 0.375 0.75 1.5 Miles

VANDEWALLE & ASSOCIATES INC.
Shaping places, shaping change



Adopted: September 26, 2017
Amended: November 27, 2023
Sources: Jefferson County,
Village of Johnson Creek, WI DNR